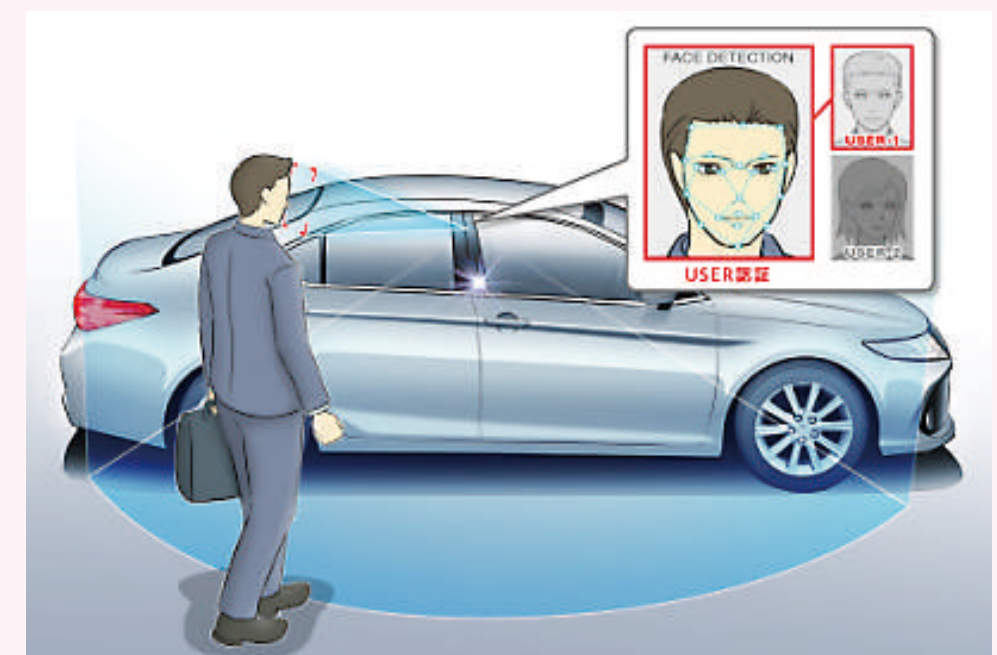
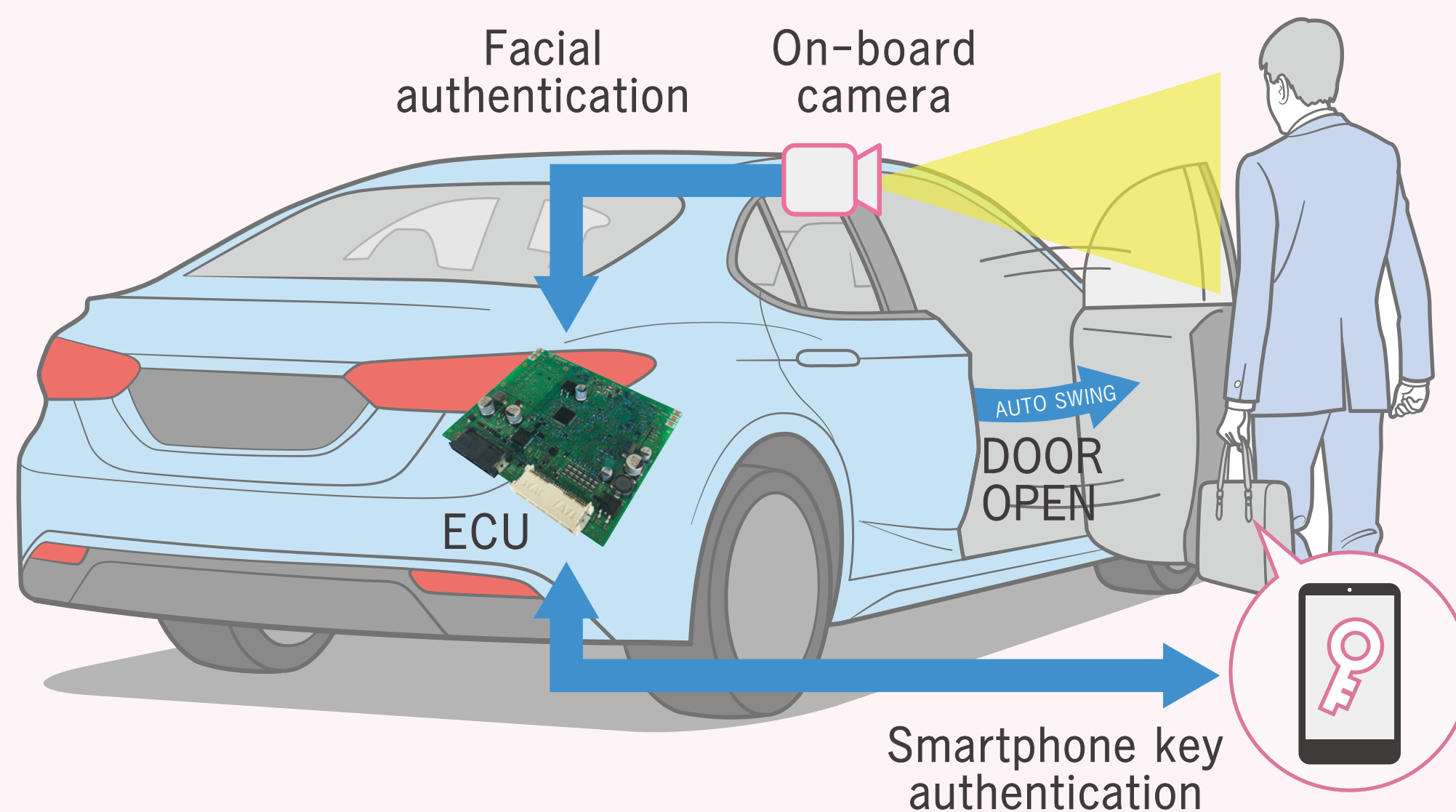


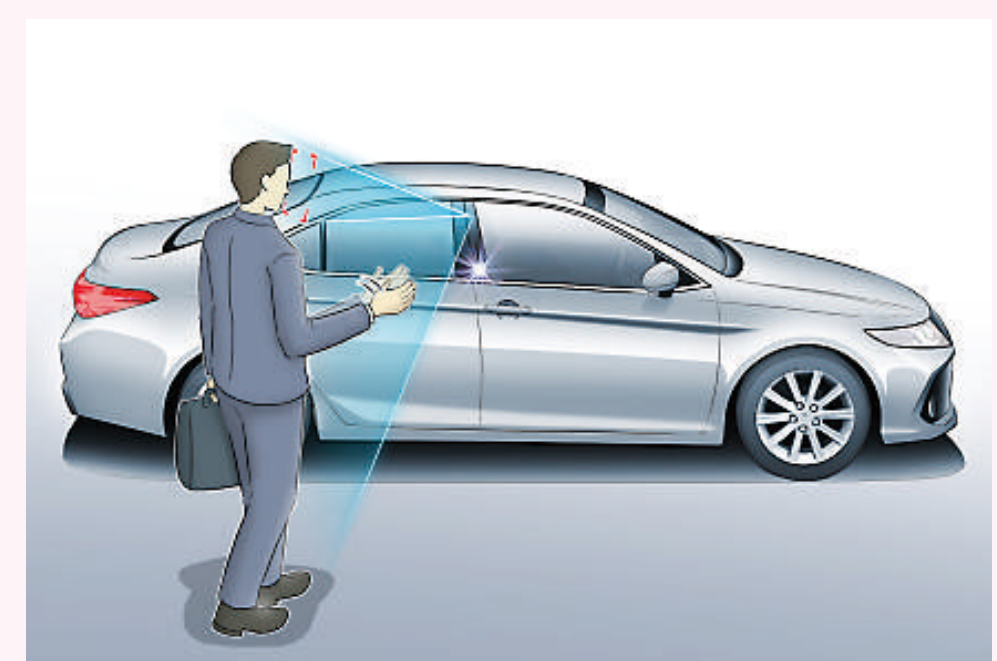
Next-generation door entry image recognition system

This system combines smartphone key technology with image recognition to provide a personalized service. It also supports smooth entry into the vehicle by allowing users to open the door using gestures.

- Perform facial authentication and detect behavior using a camera embedded in the vehicle.



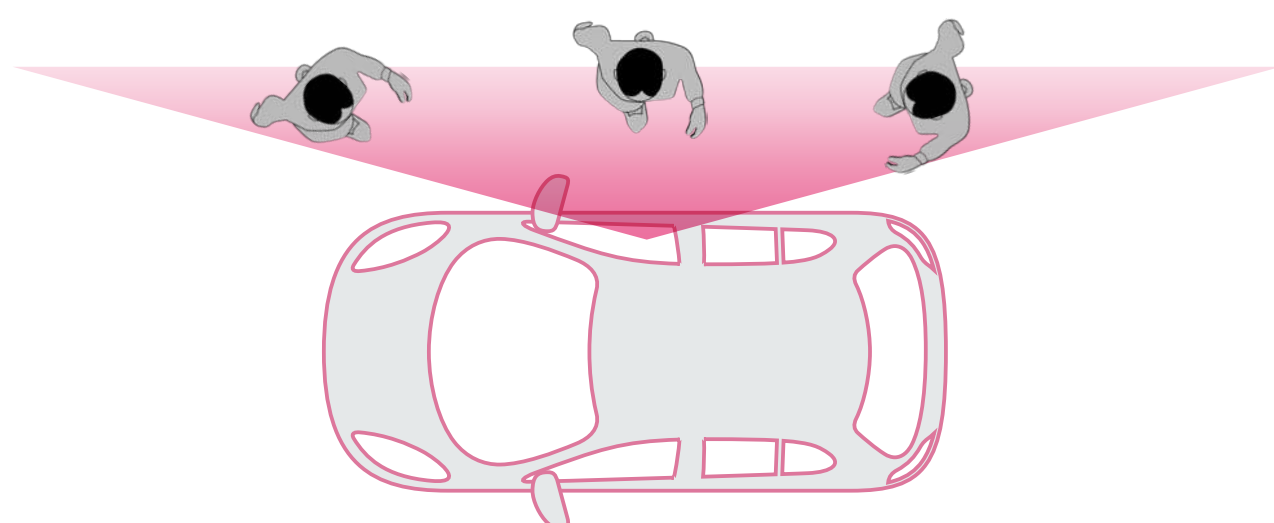
Authentication on approach



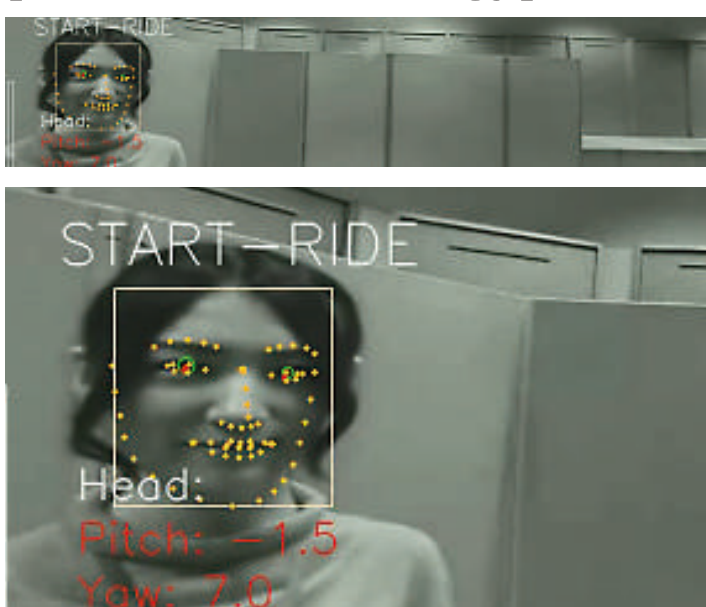
Opening the door with a gesture

Facial authentication technology

Recognition ensured from all directions (horizontal angle: over 150°)

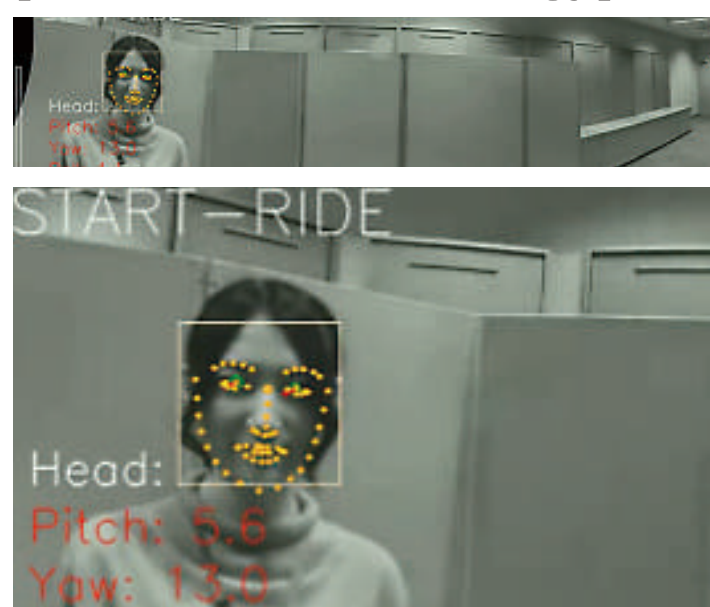


[General technology]



Facial authentication score : 0.76

[Tokai Rika technology]



Facial authentication score : 0.89

- Recognition appropriate to the image generated using proprietary skew compensation technology.
- Developed a compact camera adapted to sensing in low illumination or other conditions.

Behavior detection technology

Skeletal structure identified in real time using our proprietary deep learning technology.



- This technology provides a convenient service to users by using the skeletal structure data to recognize gestures and predict the intent to get in the vehicle.